

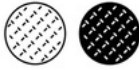
LED Stair Nosing

**starflex**  
LED

# MSSNC-FL



Durable Build



Anti-Slip Design



LED Compatibility



Energy Efficiency

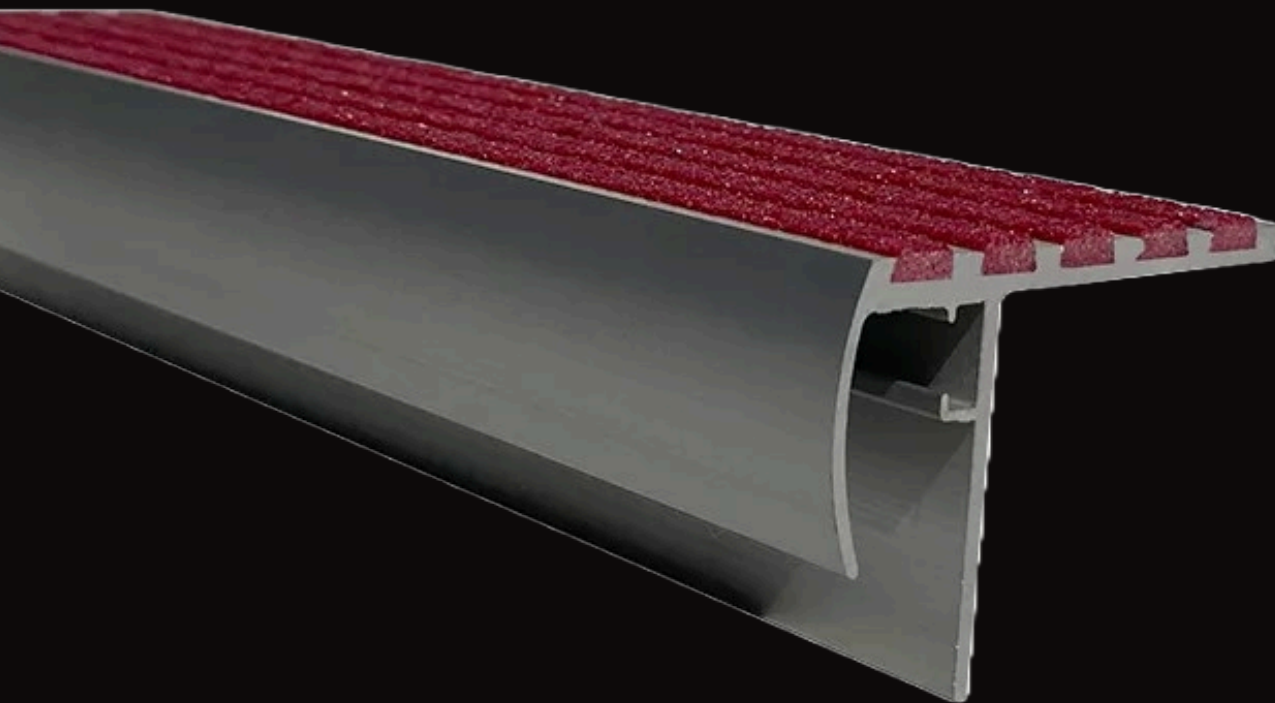


Aesthetic Options

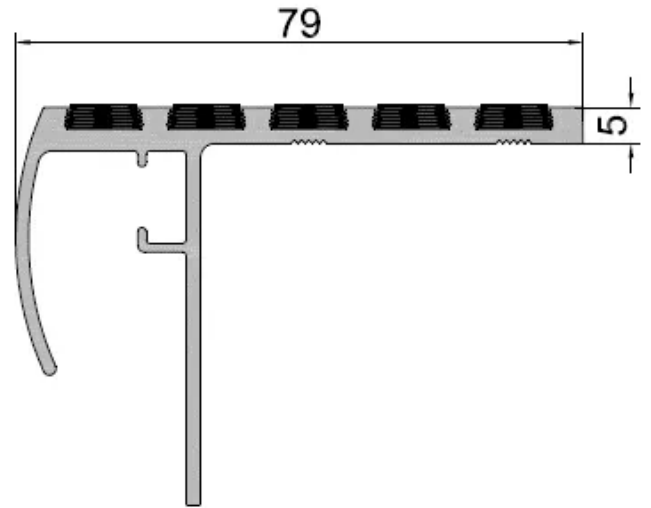


Custom Sizing

## Product Specification



# PRODUCT SPECIFICATIONS

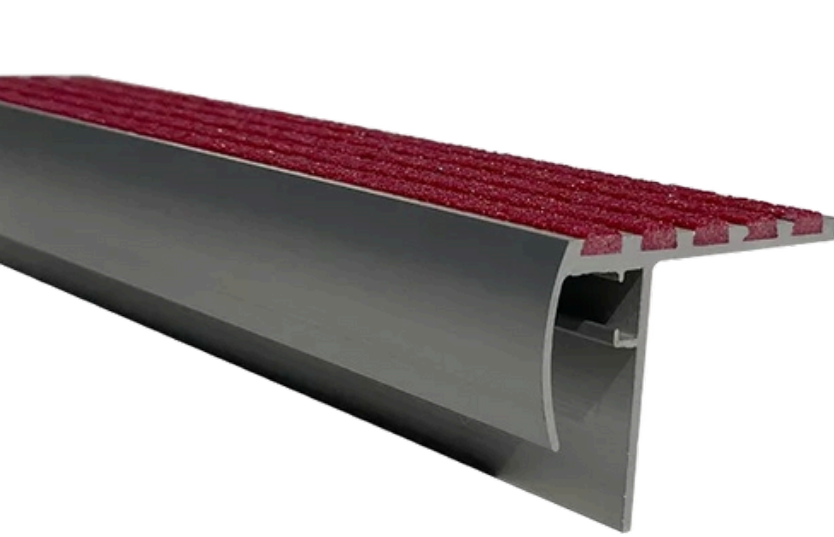


MSSNC-FL is an anti-slip carborundum stair nosing with a luminous LED strip, designed to enhance stair safety and visibility. Manufactured by Nanjing Meishuo Building Materials Co., Ltd., this product combines durability with modern aesthetics.

- **Model:** MSSNC-FL
- **Material:** Aluminum ASTM 6063
- **Temper:** T5
- **Insert:** Carborundum
- **Insert Colors:** Black, Yellow, Grey, Green
- **Dimensions:** Width: 79 mm; Height: 55 mm; Thickness: 5 mm
- **Length:** Standard 3 meters; customizable upon request
- **Finish:** Anodized or matte anodized

Customized color can be ordered

# PRODUCT FEATURES



- **Anti-Slip Surface:**

The carborundum insert provides a high level of slip resistance, ensuring safety in high-traffic areas.

- **Luminous LED Strip:**

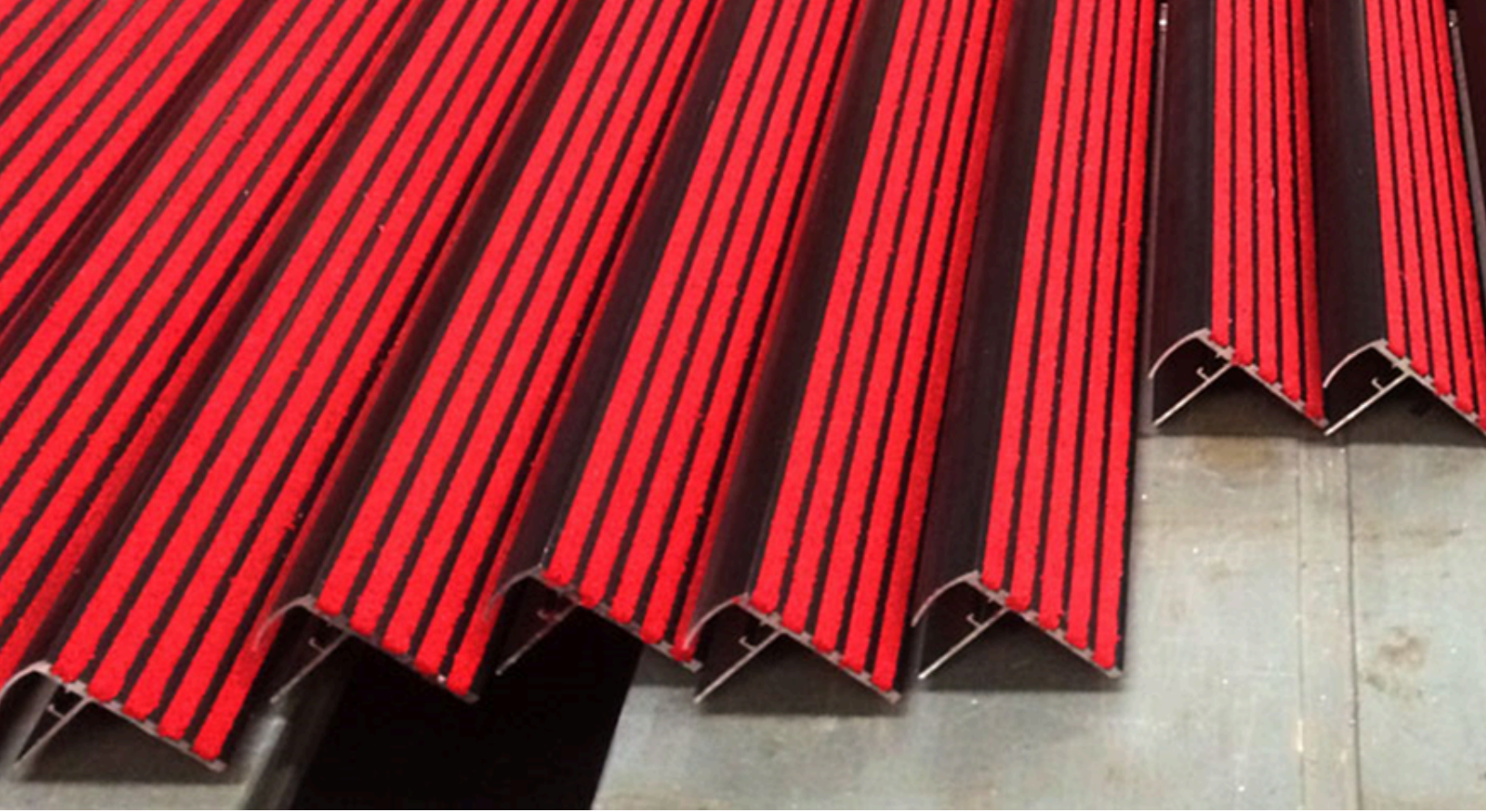
Enhances visibility in low-light conditions, contributing to overall safety.

- **Durable Construction:**

Made from high-quality aluminum alloy, offering longevity and resistance to wear.

- **Customizable Options:**

Available in various insert colors and lengths to suit specific project requirements.



# INSTALLATION INSTRUCTIONS:

## PREPARATION:

- Ensure all stairs are sound, clean, and level.
- Apply a leveling compound to worn or uneven stairs to provide a flat surface.
- Roughen smooth surfaces (e.g., marble, tile, metal) to enhance adhesion.
- Vacuum the steps to remove any loose particles.

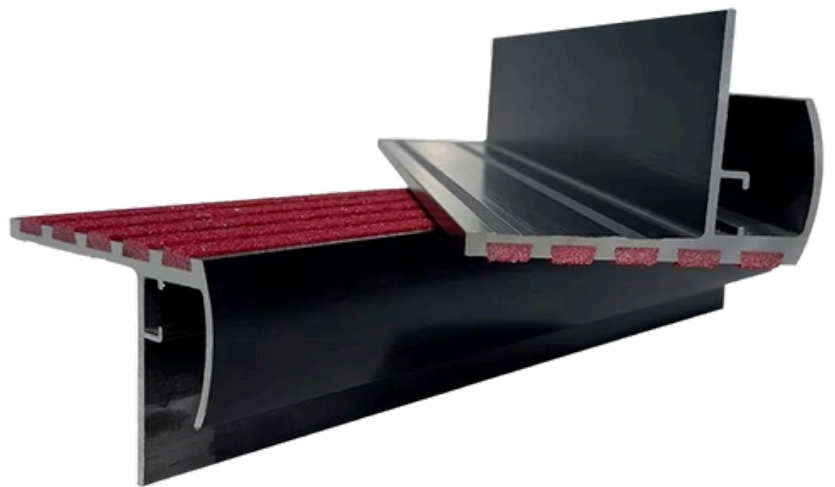
## TOOLS REQUIRED

- Shop vacuum
- Caulk gun
- Drill with appropriate bits
- Screwdriver
- For masonry installations: hammer drill and masonry bits



# INSTALLATION STEPS:

1. Block off access to the stairway to ensure safety during installation.
2. Starting from the bottom step, place the stair nosing upside down on the stair.
3. Apply a ¼” bead of adhesive around the perimeter of the underside, keeping approximately ¾” away from the edge.
4. Apply additional adhesive in a wavy pattern within the perimeter bead and around each pre-drilled hole.
5. Carefully position the nosing on the stair, ensuring it is pushed back against the front edge and evenly spaced.
6. Drill the first hole near the center, vacuum out debris, and insert the anchor screw.
7. Repeat for the remaining holes, working from the center outward.
8. Proceed to the next stair and repeat the process.
9. For exterior installations, substitute the adhesive with clear GE Silicone caulk.



# DISPLAY OF SOME ENGINEERING RENDERINGS

Designs and specifications subject to change without notice

